



D9412/D7412 Control/Communicator User's Guide Supplement

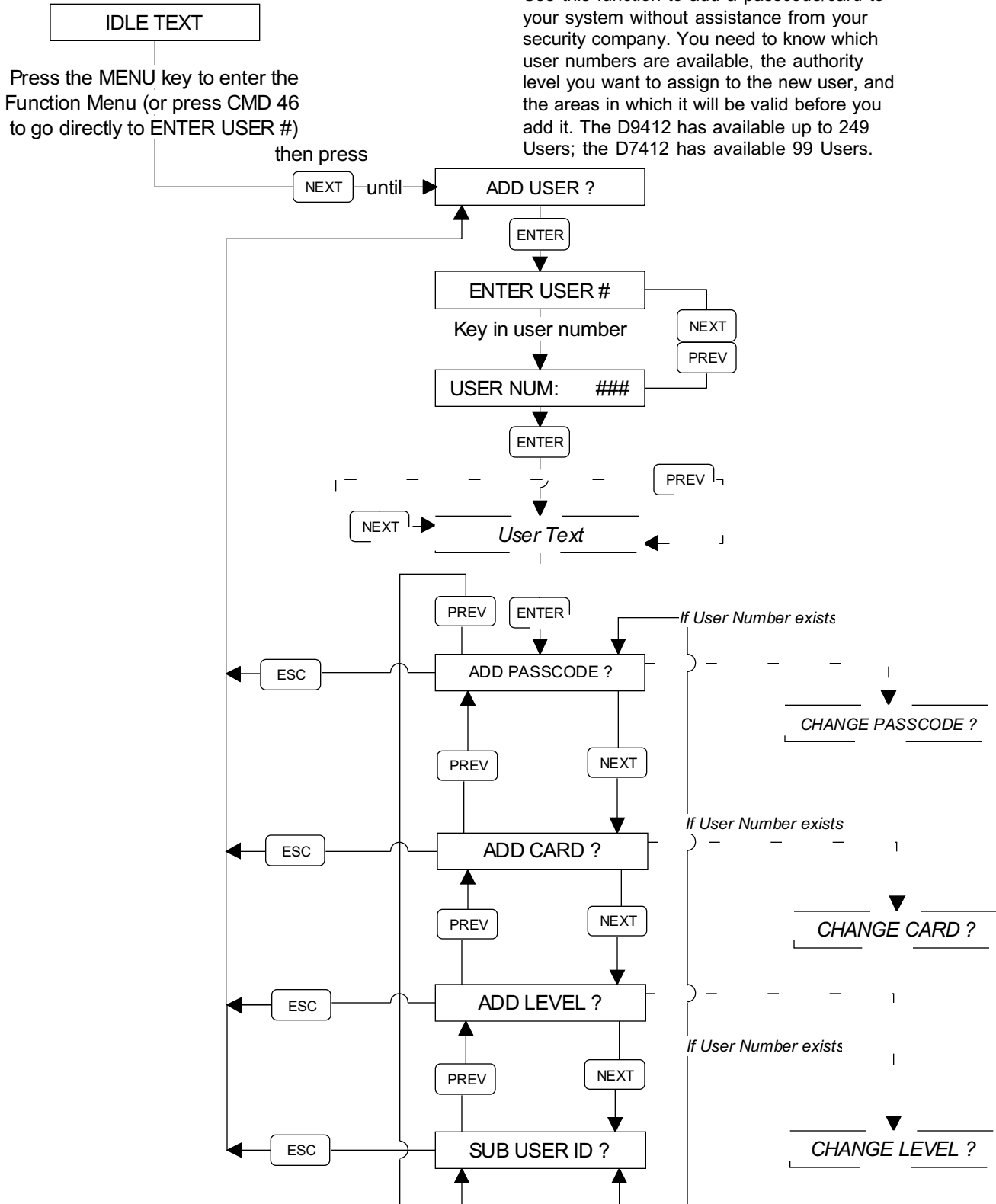
Introduction

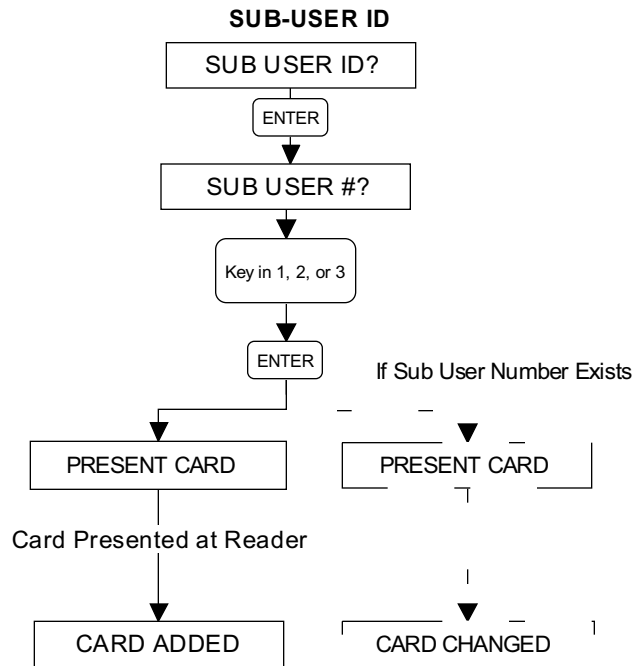
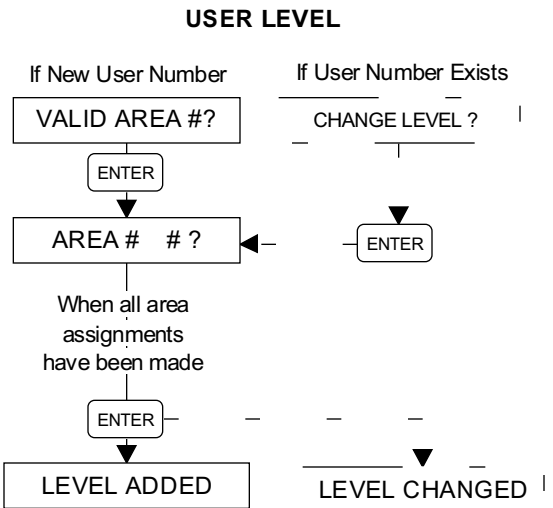
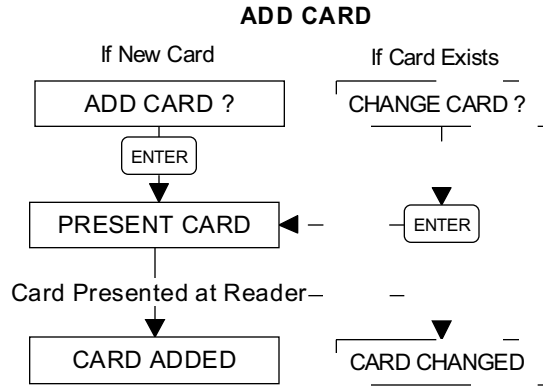
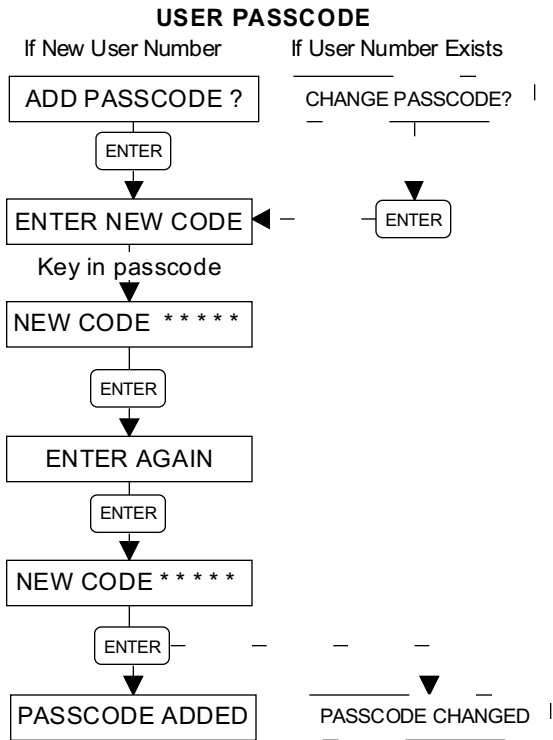
This reference supplements the Security System Owner's Manual (71-06633-000) with the added command list features for the D9412/D7412. These flow charts will step you through the operation of the new features. Please refer to the Owner's Manual for the operation of your new security system and its other basic command list features.

Add/Change User	2
User Passcode	3
Add Card	3
User Level	3
Sub-User ID	3
Delete User Function	4
Access Level Control	5
Door Control Function	6
Cycle Door Sub-Function	7
Unlock Door Sub-Function	8
Secure Door Sub-Function	9

ADD/CHANGE USER FUNCTION

Use this function to add a passcode/card to your system without assistance from your security company. You need to know which user numbers are available, the authority level you want to assign to the new user, and the areas in which it will be valid before you add it. The D9412 has available up to 249 Users; the D7412 has available 99 Users.

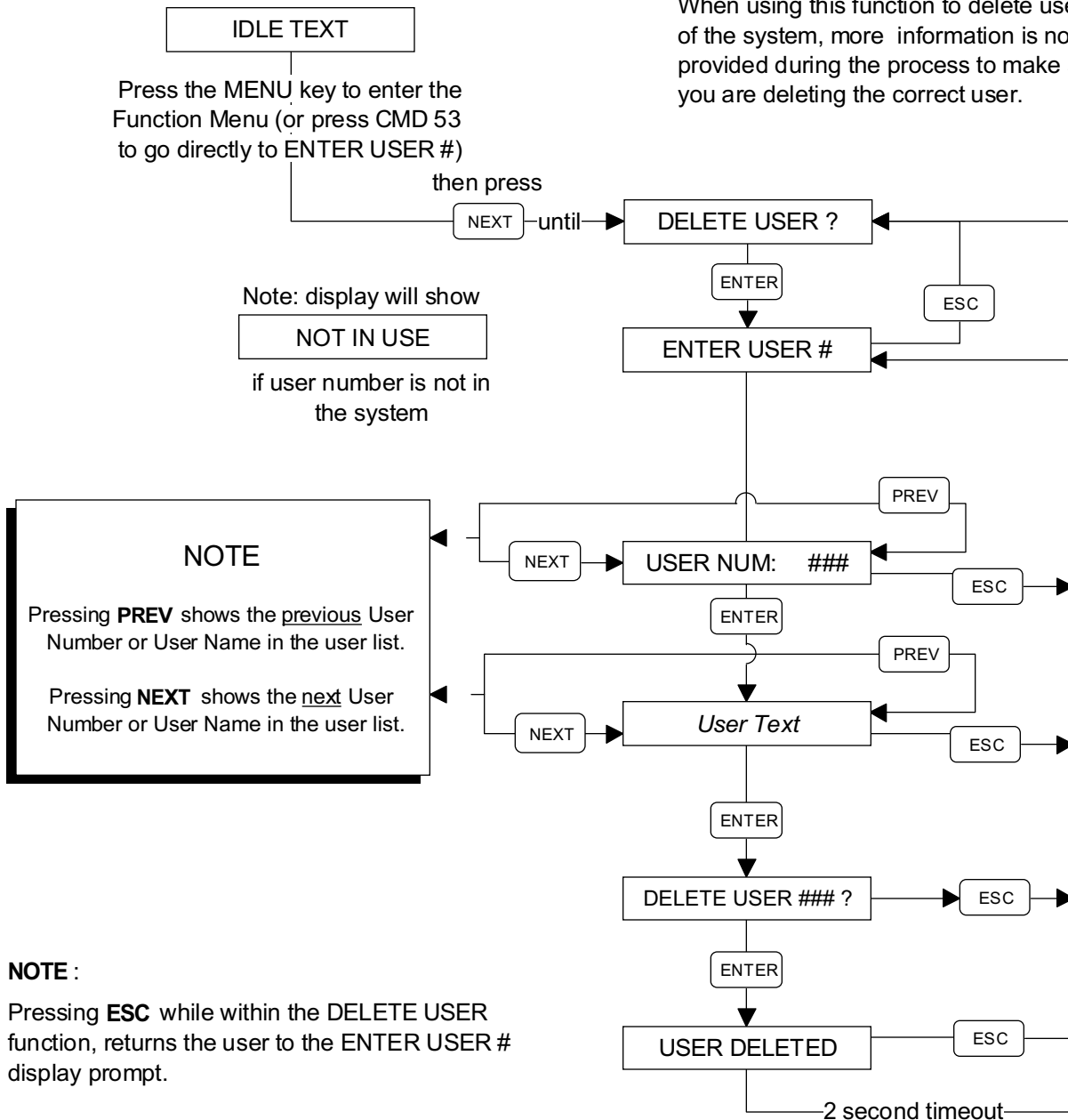




NOTE: At the end of each function the user may press the **ESC** key to return to the ENTER USER # prompt. To return to idle text, you must press the **ESC** key again.

DELETE USER FUNCTION

When using this function to delete user's out of the system, more information is now provided during the process to make sure you are deleting the correct user.



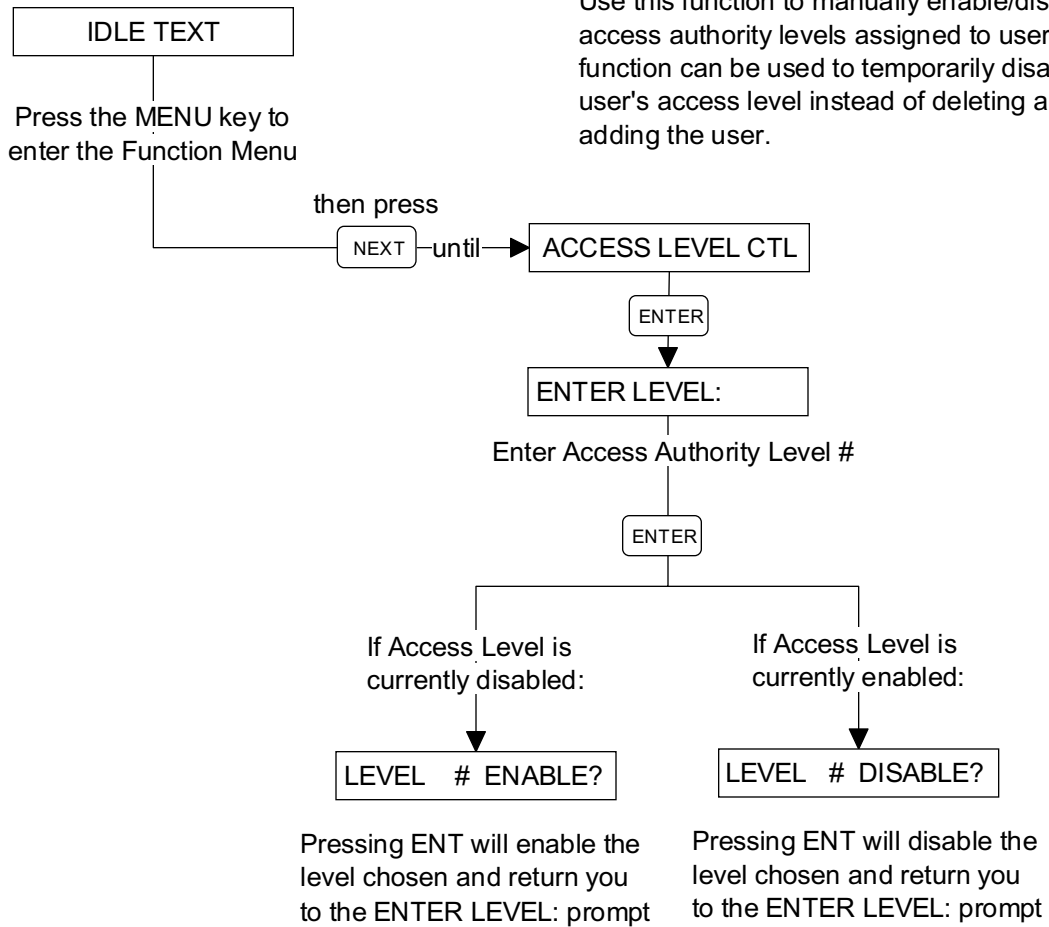
NOTE :

Pressing **ESC** while within the DELETE USER function, returns the user to the ENTER USER # display prompt.

Pressing **ESC** while at the ENTER USER # display prompt, returns the user to the DELETED USER prompt in the function menu.

ACCESS LEVEL CONTROL

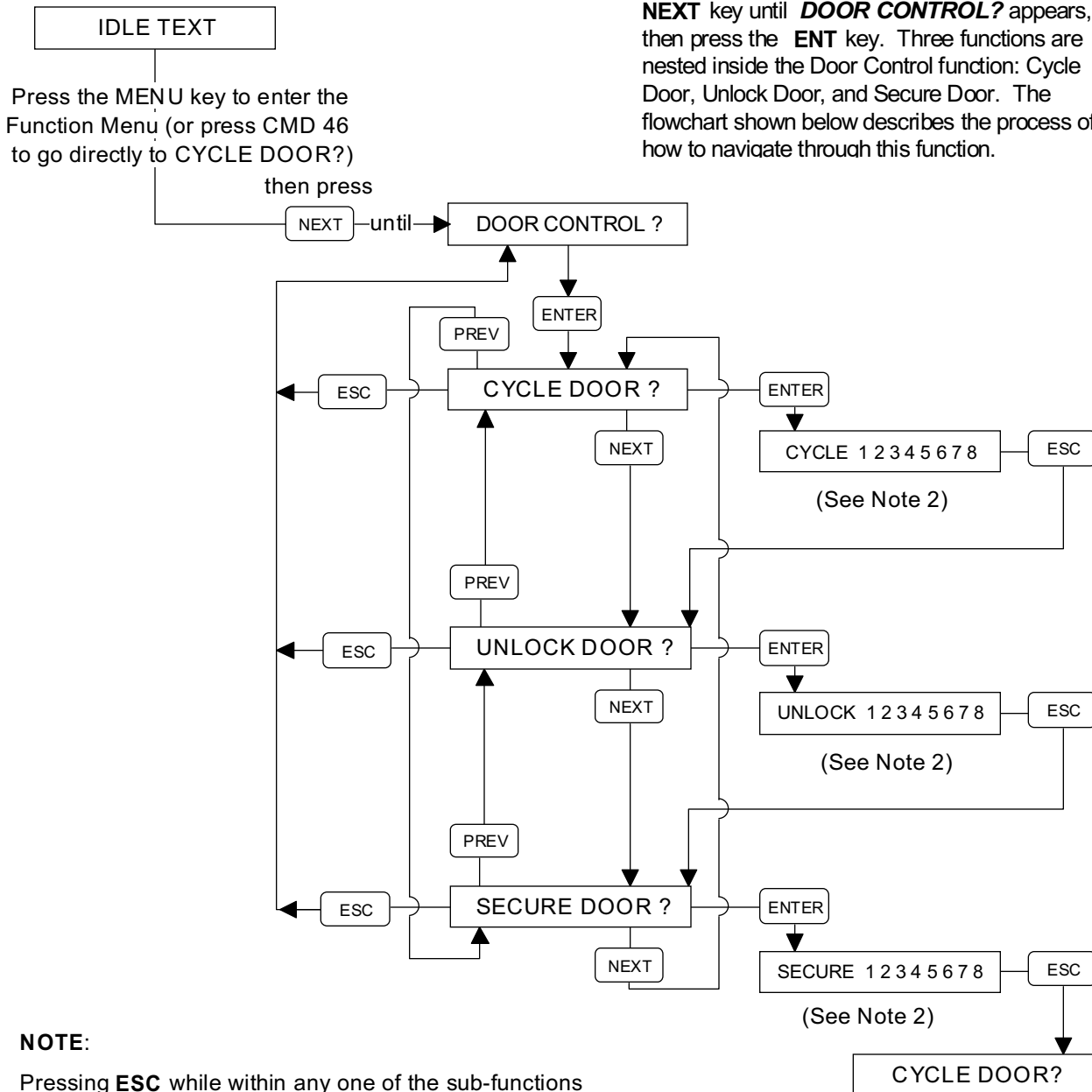
Use this function to manually enable/disable access authority levels assigned to users. This function can be used to temporarily disable a user's access level instead of deleting and adding the user.



NOTE: Pressing the ESC key twice will exit you out of this function. After 20 seconds of inactivity, the system returns to idle text.

DOOR CONTROL FUNCTION

To access the Door Control function, press **COMMAND 46** or press the **MENU** key and the **NEXT** key until **DOOR CONTROL ?** appears, then press the **ENT** key. Three functions are nested inside the Door Control function: Cycle Door, Unlock Door, and Secure Door. The flowchart shown below describes the process of how to navigate through this function.



NOTE:

Pressing **ESC** while within any one of the sub-functions (CYCLE DOOR, UNLOCK DOOR, SECURE DOOR), returns the user to the top level display prompt for that sub-function.

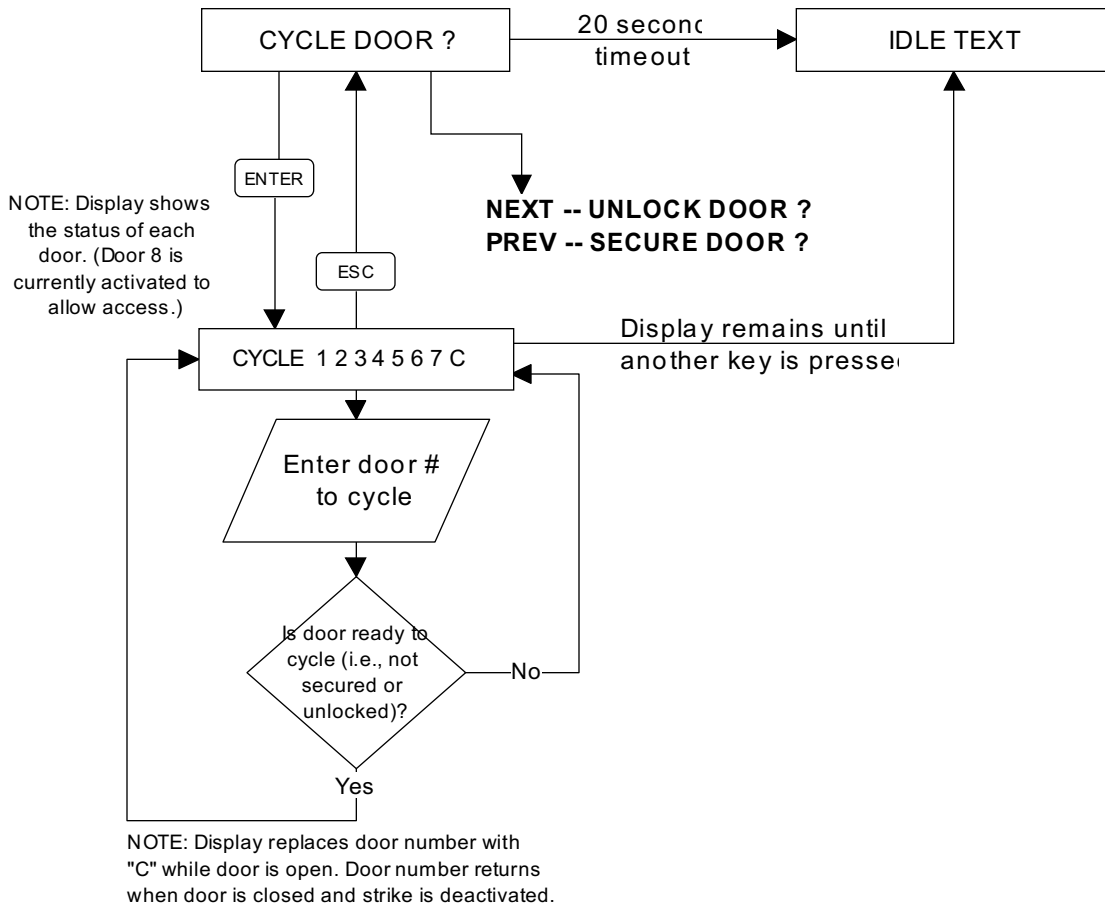
Pressing **ESC** while at the top level display prompt of any sub-function (CYCLE DOOR, UNLOCK DOOR, SECURE DOOR), returns the user to the DOOR CONTROL ? prompt in the function menu.

NOTE 2:

- # = Door is normal (available)
- = Door is not active, not in scope, or user does not have access level authority
- C = Door is on timed door sequence
- U = Strike and shunt are latched active (held open)
- X = Strike and shunt are deactivated (secured)

CYCLE DOOR SUB-FUNCTION

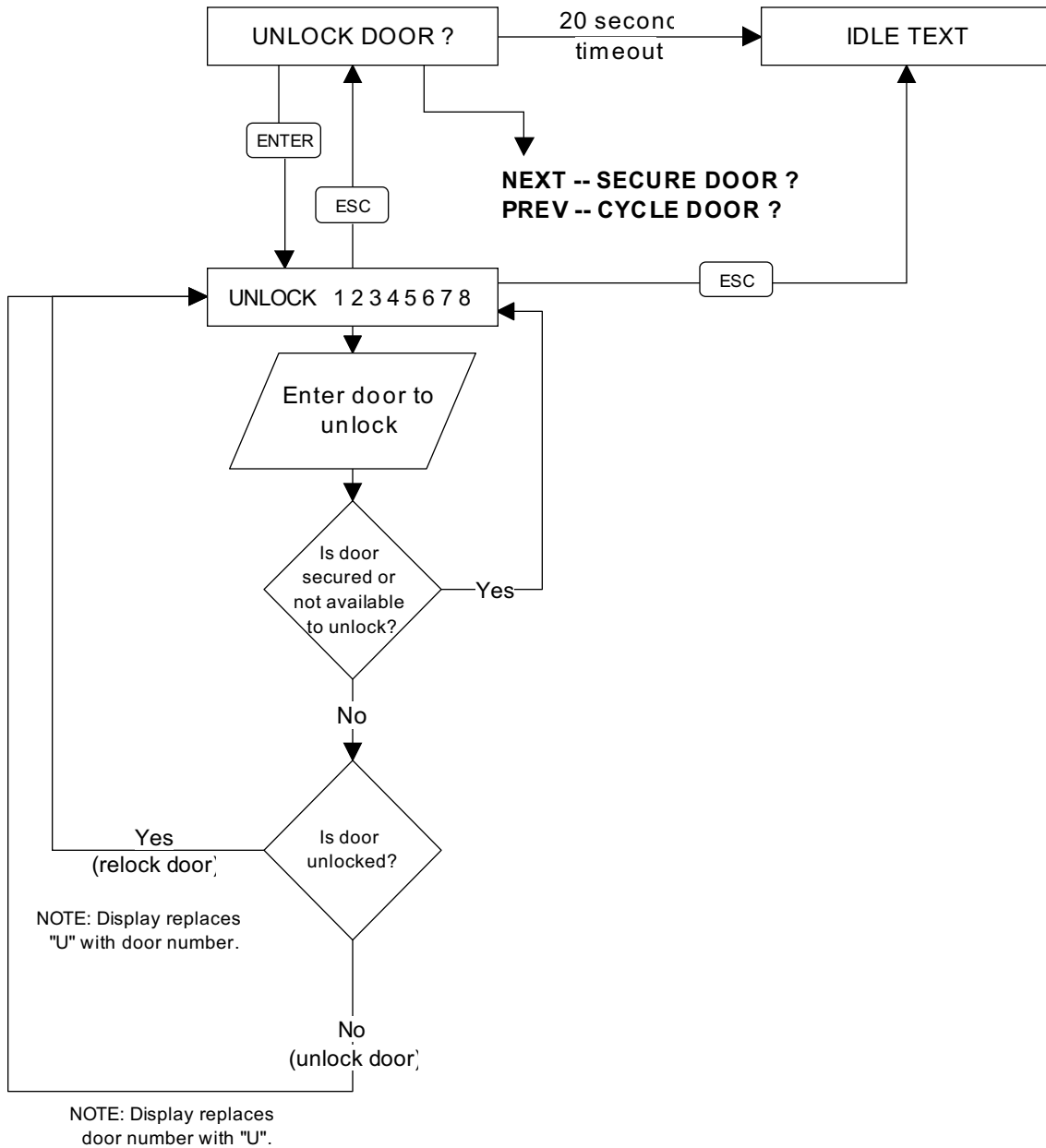
User's may use this function to momentarily unlock the access door to allow a person an area. The amount of time the door stays unlocked is programmed by your security company.



NOTE: Pressing **ESC** at any point, returns the user to the UNLOCK DOOR display prompt.

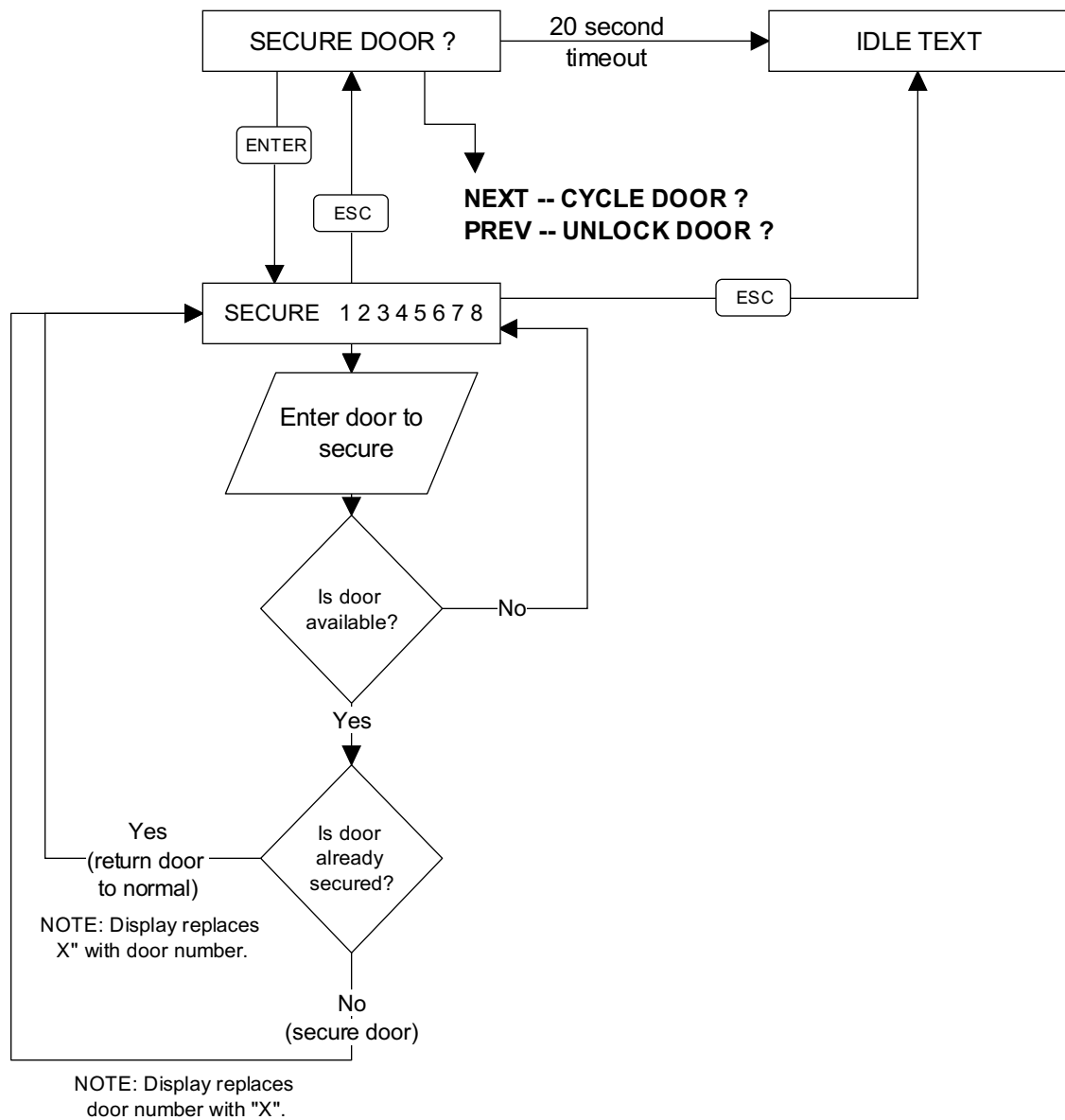
UNLOCK DOOR SUB-FUNCTION

User's may use this function to keep the door unlocked to allow free access. This function is used to lock the door back to normal operatic



SECURE DOOR SUB-FUNCTION

The Secure Door function can be used to prohibit access to users regardless of their access authority level.





™ The Radionics logo is a registered trademark of Radionics
© 1997 Radionics, Inc., Salinas, CA, USA. All rights reserved.
Radionics, Inc., PO Box 80012, Salinas, California 93901-0012